



CCF SOUTH AUSTRALIAN OFFICE

ABN 92 619 501 502

Level 1

1 South Road

THEBARTON SA 5031

P (08) 8111 8000

F (08) 8111 8002

E CCF_SA@CCF_SA.COM.AU

www.CCF_SA.com.au

09 December 2021

Women in Civil Committee (WIC)

Via: CCF SA Board Director and WIC Representative: Natasha Hemmerling

Via: email natasha@clarkehemmerling.com.au

**TERMS OF APPOINTMENT LETTER:
CCF SA ADVISORY GROUP – WOMEN IN CIVIL (WIC)**

RESOLUTION

At the CCF SA Board Meeting dated Monday 25th October 2021 the CCF SA Ltd board resolved that:

THAT the Women in Civil, Future in Civil and a Retired Members Groups be formalised as Advisory Groups to the CCF SA Board as per rule 10.8.

CCF SA CONSTITUTION

10.8 Appointment of advisory group

- a) The directors may establish an advisory group. The directors may appoint and remove members of the advisory group and terminate an advisory group at any time.
- b) The functions of the advisory group will be decided by the directors.
- c) The directors may specify:
 - i. the manner in which proceedings of an advisory group are conducted;
 - ii. the matters which the advisory group must consider in carrying out its functions; and
 - iii. any other matters concerning the advisory group or its functions that the directors decide.
- d) For the avoidance of doubt, an advisory group established under rule 10.8(a) will not be delegated with any power of the board.

The CCF SA Board are pleased to formally outline the terms of WIC's appointment below.

WOMEN IN CIVIL (WIC) DETAILS

The function of the WIC Board Advisory Group are as follows:



MISSION STATEMENT

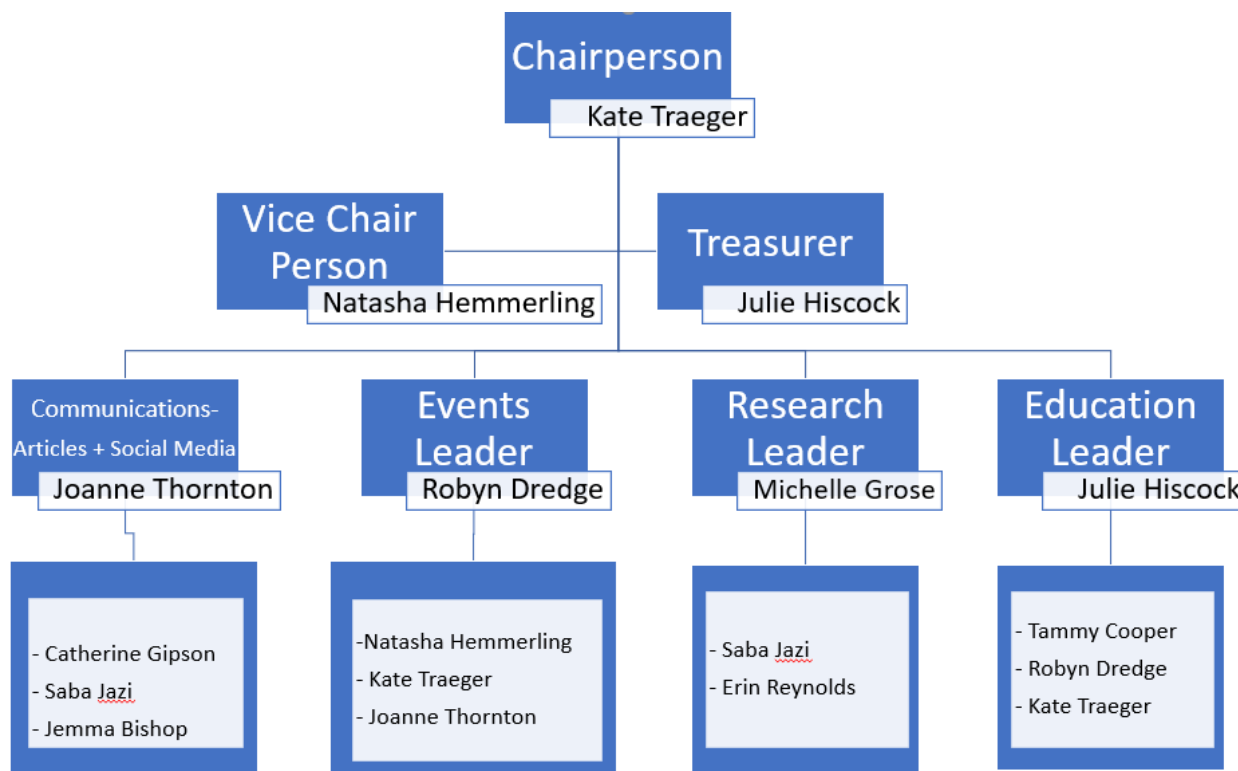
The Committee is to have a positive and aspirational focus on Women in the Civil Construction Industry, embodied by celebrating women in the industry, from workers on the ground to leadership and management.

We want to celebrate their achievements and contributions to the industry, and also to encourage women to join the industry. Activities designed to meet their obligations include support, mentoring, information and networking opportunities for women working across the civil construction industry.

TERMS OF REFERENCE

Refer attached 'CCF SA Women in Civil Sub Committee – TERMS OF REFERENCE' dated

ADVISORY GROUP MEMBERS





CCF SOUTH AUSTRALIAN OFFICE

ABN 92 619 501 502

Level 1

1 South Road

THEBARTON SA 5031

P (08) 8111 8000

F (08) 8111 8002

E CCF SA@CCF SA.COM.AU

www.CCF SA.com.au

I take this opportunity to welcome WIC as an Advisory Group supporting the CCF SA Board and I thank you for your commitment to the civil industry and CCF SA.

Regards

Rebecca Pickering
Chief Executive Officer (CEO) Civil Contractors Federation SA (CCF SA)